

TimeOut

London

GUIDE TO GREENWICH & DOCKLANDS BY DLR 2010



SHOPPING | EVENTS | ATTRACTIONS | BARS
RESTAURANTS | NIGHTLIFE | CULTURE



Published by
Time Out Magazine Ltd
Universal House,
251 Tottenham Court Road,
London W1T 7AB
Tel 020 7813 3000
Fax 020 7813 6001
www.timeout.com

Editor Mark Frith

Guide editor Laura Lee Davies

Sub editors Claire Hills, Lewis Lyons,
 Patrick Welch

Contributors Christopher Parkin, Natasha
 Polyviou, Kohinoor Sahota

Design Christian Tate, Nicola Wilson

Cover illustration John Oakey

Picture research Kim Seymour

Group production director Mark Lamond

Production manager Brendan McKeown

Time Out Magazine Ltd is part of
the Time Out Group:

Chairman Tony Elliott

Chief executive officer David King

Magazine managing director Mark Elliott

Group general manager

Nichola Coulthard

Online managing director David Pepper

Guides managing director Peter Fiennes

International managing director

Cathy Runciman

Group Financial director Paul Rakkar

Printed by St Ives Blackburn

This is a product of Time Out
Brand Solutions:

Derek Pratt 020 7813 6008

James Caley 020 7813 6040

© Copyright Time Out Group Ltd 2010.
 All rights reserved. All information was
 checked at time of going to press. The
 publisher and the organiser cannot be held
 responsible for any errors.

Picture credits Museum of London Docklands
 cover, p5, 14, 15, 16, 23; Historic Royal Palaces
 cover, p17; richardrowland.co.uk cover, p2, p6, 7,
 8, 9, 10, 11, 12, 19; Theatre Royal Stratford East
 p5; Warren King p6; Kate Beatty p8, 9, 11, 15, 16,
 17, 18, 20; Neil Turner p10, 12; Canary Wharf p11;
 Philip Vile p13; Ludovic Des Cognets p18; Discover
 Greenwich p20; Courtesy of the Board of Trustees of
 the Armouries p21; Greenwich Comedy Festival p22



Maritime GREENWICH
 A WORLD HERITAGE SITE



Docklands
Light Railway

CANARY
 WHARF

SHOPPING



Historic Royal Palaces
TOWER OF LONDON



Welcome

Make this the summer you decide to do something different... follow the river out of central London to discover a whole new world, courtesy of the DLR

Londoners have a terrible habit of being a bit obsessed with travel. 'I had to wait 10 minutes for a bus' is a regular opening statement we greet friends with on an evening out. Our other obsession is finding something new in the city we live and work in, somewhere we can take mates to or entertain the family with next weekend...

To those who aren't in the know, Greenwich and Docklands probably seem worlds apart – one full of tradition, quaint markets and arty galleries, the other a hive of business and designer shops. But these two worlds come together so easily when you explore by DLR.

Get from the riverside delights and rich heritage of the Tower of London to Canary Wharf's relaxing piazzas and tempting shopping malls in just 12 minutes. From either Canary Wharf or West India Quay DLR (the better option at weekends or when coming from Stratford) you're less than five minutes away from Museum of London Docklands, one of London's most beautiful and fascinating treasures, set in a former sugar warehouse. From here you are just over 10 minutes away from Greenwich with its parks, bars, stalls and iconic museums, and if you climb up to the Observatory you'll feel you can almost touch the stars, too.

Let this guide inspire you to find a new day out, a fresh idea for a special evening, or simply a smart way to zip around by DLR. Enjoy!



Contents

- 3** **How to get here**
- 4** **Explore east London by DLR**
- 6** **Greenwich days out**
- 10** **Canary Wharf**
- 14** **Museum of London Docklands**
- 17** **Tower of London**
- 18** **Greenwich culture & dining**
- 21** **Events**



HOW TO GET HERE

How to get here

Getting to Greenwich, Docklands, the Tower of London and Canary Wharf is easy and quick with the DLR

Days out on the DLR

Travelling by DLR is a unique experience in London. The fully automated system on elevated tracks offers great views as you travel, with huge windows for a bright and airy journey. Opened in 1987, its routes have expanded faster than any other UK railway, and it now carries almost 70 million passengers each year.

There is a Passenger Service Agent on board every train to provide assistance. Children under the age of 11 travel free.

DLR tickets and train times

- An Oyster pay as you go card or off-peak Day Travelcard are the cheapest methods – or you can buy single tickets at any DLR station.
- A zone 1 to 3 adult single ticket costs £4 (under-16s £2).
- Children under 11 travel free on the DLR and tube when accompanied by an adult.
- A Rail and River Rover ticket costs £14.50 (child £7.25, family £37). This gives one day's travel on the DLR with hop-on, hop-off travel on

City Cruises riverboats between Westminster, Waterloo, Tower and Greenwich piers.
Please go to www.tfl.gov.uk for more information on fares and ticketing.

Trains run at least every ten minutes and as frequently as every three and a half minutes at peak times.

For timetable information visit www.dlr.co.uk or call the 24-hour travel information line, 08432 221 234.

All DLR stations have lifts and all DLR trains also have designated wheelchair and pushchair areas.

The DLR connects to the London Underground network at Bank, Tower Hill, Canary Wharf, Heron Quays, Stratford, Canning Town and Bow Church, and to the London Overground East London Line at Shadwell.

Please note

Improvement works are underway on the DLR network; check before you set out, at www.dlr.co.uk/improvements.

Explore east London by DLR

The Docklands Light Railway (DLR) is the easiest way to explore Greenwich, Docklands and Tower Hill, linked to central London at Bank, east to Stratford and Beckton, and south to Woolwich Arsenal and Lewisham.

Bank

Linking the DLR with the Central and Northern Lines, Bank is also the ideal place to jump off and explore the new Galleries of Modern London at Museum of London at London Wall, or to take a walk to the beautifully restored Monument at Fish Street Hill.

Stratford 25 mins
Greenwich 23 mins
West India Quay/Canary Wharf 14/11 mins

Tower Gateway



Two minutes' walk from the Tower of London and Tower Bridge, Tower Gateway also allows you to get close to the Thames or stroll to the historic streets of the City.

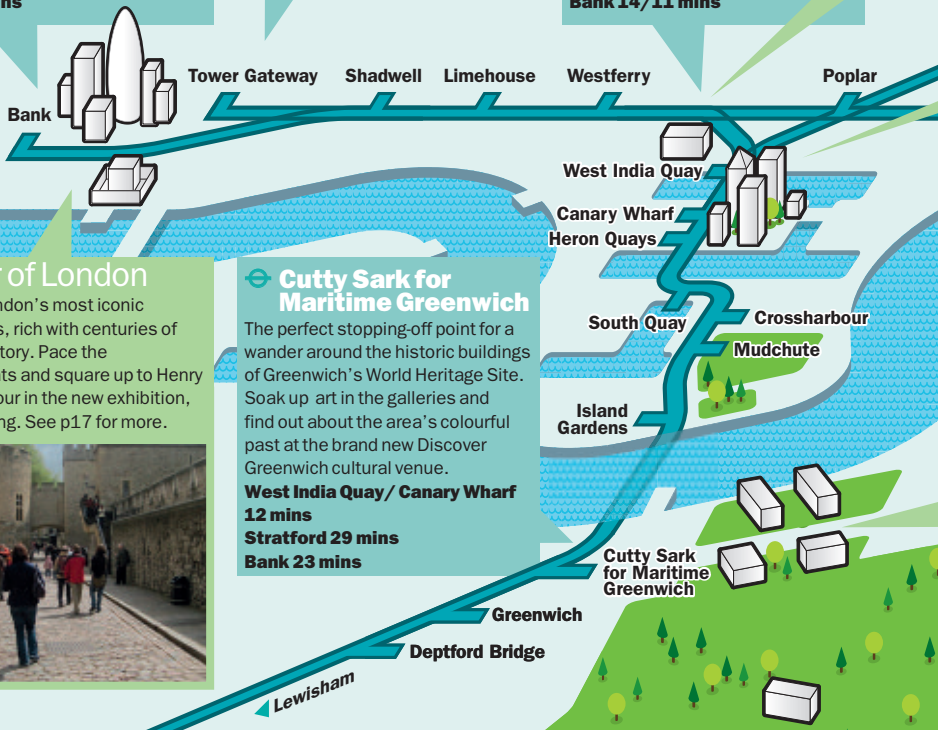
Cutty Sark for Maritime Greenwich 22 mins
West India Quay/Canary Wharf 12 mins

West India Quay / Canary Wharf

Taking you into the heart of waterside Docklands and the shopping malls of Cabot Place, Canada Place, Churchill Place and Jubilee Place, these stations are ideal when you want to find somewhere good to eat, a place to meet friends or just enjoy a spot of retail therapy.

Cutty Sark/ Greenwich 12 mins
Stratford 14 mins
Tower Gateway 12 mins
Bank 14/11 mins

DLR



Tower of London

One of London's most iconic landmarks, rich with centuries of bloody history. Pace the battlements and square up to Henry VIII's armour in the new exhibition, Fit for a King. See p17 for more.



Cutty Sark for Maritime Greenwich

The perfect stopping-off point for a wander around the historic buildings of Greenwich's World Heritage Site. Soak up art in the galleries and find out about the area's colourful past at the brand new Discover Greenwich cultural venue.

West India Quay/Canary Wharf 12 mins
Stratford 29 mins
Bank 23 mins



Kids under 11 travel free on the DLR – see p3 for information on fares and tickets.



Museum of London Docklands

There's lots to discover about the Thames and how its fortunes have shaped Britain, London and the East End for centuries. Galleries, activities and events offer a fascinating visit for all ages. Go to page 14 for more.



Canary Wharf

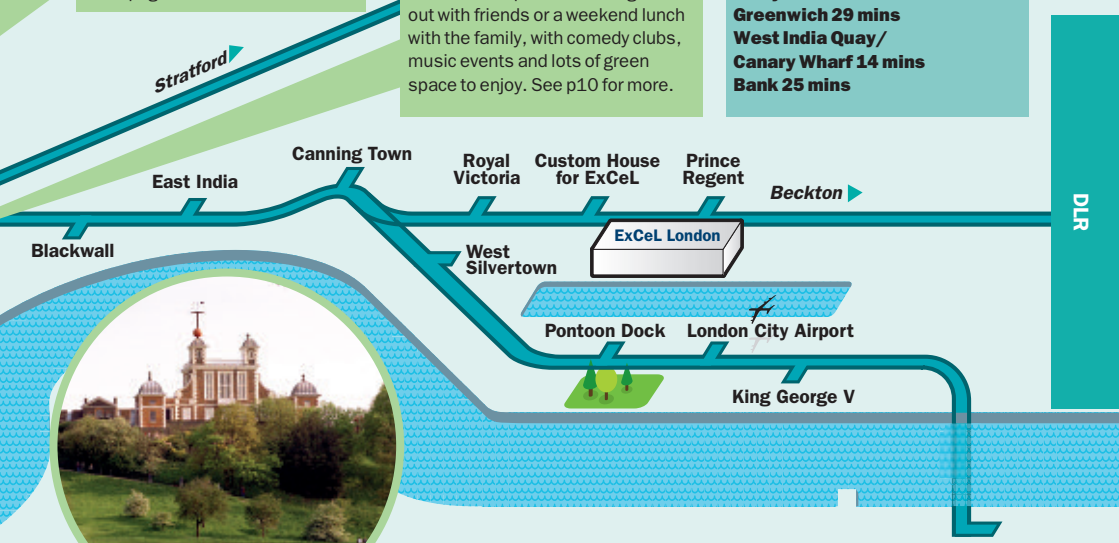
One of London's most refreshing shopping destinations, Canary Wharf is also perfect for a night out with friends or a weekend lunch with the family, with comedy clubs, music events and lots of green space to enjoy. See p10 for more.



Stratford

One of east London's most vibrant culture spots, this is where to head for Theatre Royal Stratford East (pictured above) and the nearby children's activity centre Discover. Later in 2010 the new Stratford International Extension to the DLR will also be opening, preparing for the run up to the 2012 Olympic and Paralympic Games.

Cutty Sark for Maritime Greenwich 29 mins
West India Quay/Canary Wharf 14 mins
Bank 25 mins



Greenwich

One of London's best-loved 'villages', Greenwich has the buzz of markets, great pubs and a host of theatres and restaurants, but is also a wonderful open space. Take the kids, meet friends, or simply relax in the park with the Isle of Dogs stretching out across the water. Go to p6 and p18 for more.

Woolwich Arsenal

Dipping down into south-east London, this newly built link across the Thames from Docklands offers the perfect way to explore historic Royal Arsenal. **Cutty Sark for Maritime Greenwich 35 mins**
West India Quay/Canary Wharf 23 mins
Bank 29 mins
Stratford 29 mins



For more information and ideas for days out, go to www.dlr.co.uk





Get here by DLR

To access the main attractions, the nearest DLR station is Cutty Sark for Maritime Greenwich



Greenwich days out

Greenwich has it all. Breathtaking art and architecture, wide open spaces and the best view in London – plus top-class museums, lovely shops and fantastic markets

Discover Greenwich

Standing in the grounds of the Old Royal Navy College, alongside the wonderful period architecture of this historic Thames-side corner of London is the brand new visitor centre Discover Greenwich. It's a good starting point for Londoners and visitors alike to discover more about the area. Pulling together the history of Maritime Greenwich and the nearby Old Royal Naval College, Discover Greenwich is also a cultural venue and a place to eat and drink. Its



development also includes a gallery space, the Clore Learning Centre and the new Tourist Information Centre (www.visitgreenwich.org.uk) where you can buy tickets for events. There are also daily walking tours of the Greenwich World Heritage Site, leaving from the Tourist Information Centre at 12.15pm and 2.15pm. *2 Cutty Sark Gardens, SE10 9LW (0870 608 2000).*

National Maritime Museum

Old and new contrast within the grand walls of one of London's most iconic museums. There is always a sense of discovery – not only in exhibits that chart the development of

Britain's seafaring prowess in war and peace, but also because there are usually new exhibits and galleries to explore. The Sammy Ofer wing opens in 2011, so for now you'll find Nelson's blood-stained uniform from the Battle of Trafalgar in the great



Discover Greenwich

hero's collection on the museum's ground floor.

There are regular activities, especially at weekends and in school holidays, when families can set off on trails around the museum, or hear tales of exploration and innovation, and often get working on art inspired by the galleries of grand design, historic feats on the high seas, and modern-day seafaring achievement. *Romney Rd, SE10 9NF (020 8858 4422).*



GREENWICH VALUE All the major museums are free and the great vistas around them won't cost you a thing either. Head through the park to the Wolfe viewpoint near the Royal Observatory and revel in a spectacular panorama of London, from the City right to The O2.



Old Royal Naval College

Old Royal Naval College

The sumptuous sight you would see if you arrived by river in the 18th Century is almost exactly the same as today – Christopher Wren’s beautiful Royal Hospital, which in the late 1800s became the Royal Naval College. In a previous guise, this was also the site of a Tudor palace, birthplace of Henry VIII and Elizabeth I. The Old Royal Naval College is a wonderful place to roam, with highlights including the magnificent Painted Hall. For a truly exceptional experience, go to one of the concerts held in the chapel.

King William Walk, SE10 9LW (020 8269 4799).

Royal Observatory

Sitting at the top of Greenwich Park, the Royal Observatory provides a



chance to look further across London as well as further into the sky. Its buildings house a collection of early instruments used for astronomy and the development of timekeeping. In the courtyard, children can stand with a foot in both the east and the west on the Meridian line while their parents grab a coffee and enjoy the views. The Peter Harrison Planetarium, set just behind the Observatory, has stunning shows about the galaxy, including live presentations and the chance to watch the night sky yourselves. *Blackheath Avenue, SE10 8XJ (020 8858 4422).*

Fan Museum

The Fan Museum is a unique fashion museum with a vast collection, notably of 17th- and 18th-century fans. Housed in a pair of lovely 1721

Great Outdoors

Greenwich has many beautiful buildings and spectacular views. When its palaces and homes were built architects like Christopher Wren knew that promenades, greens and avenues would afford their work the best perspectives from which to be admired.

Greenwich Park offers enough space on the slopes for everyone. Avenues of sweet chestnut trees still mark out the formal, French-style layout of the park originally designed for Charles II, yet over the other side in a south easterly direction The Wilderness is an area of wild growth where the park’s deer are free to roam. In this corner you will also find the Flower Garden and the Secret Garden Wildlife Centre for observing the park’s inhabitants as they go about their business.

On any day of the week you might see a host of joggers or a gaggle of ‘running mummies’ on a post-natal fitness kick, but in summer there are tennis courts, cricket pitches marked out, and a putting green. *Greenwich Park, Romney Rd, SE10 8QY (020 8858 2608).*



Greenwich Park

5 great places by DLR... for families

- **We are Astronomers at the Peter Harrison Planetarium (see right)**
- **Sailor town’s streets at Museum of London Docklands (see p14)**
- **Picnicing at Westferry Circus Gardens (see p11)**
- **How to defend a battlement at Tower of London (see p17)**
- **Play guitar at the British Music Experience at The O2 (see p19)**



Queen's House

buildings in a suitably elegant corner of Greenwich, some of the 3,500 fans in their collection date back to the 11th century, but others bring the archive up to date, as the museum explores not only design trends but the fan's social significance past and present. *12 Crooms Hill, SE10 8ER (020 8305 1441).*

Ranger's House

An elegantly grand villa, the Ranger's House is a much-loved part of Greenwich's Georgian landscape. Take a tour of the panelled interiors and survey the Wernher Collection – a gorgeous permanent exhibition of medieval and Renaissance jewellery, porcelain and works of art that was brought together by Victorian diamond magnate Sir Julius Wernher. *Greenwich Park, SE10 8QX (020 8853 0035).*

Queen's House

Greenwich was a much-loved retreat for royals, including Henry VIII's young princess Elizabeth. The Queen's House was built as a summer villa for Charles I's wife, Queen Henrietta Maria, and remains a serene site of Renaissance grandeur, which can be enjoyed as an art gallery. Although there are great works by Hogarth,

Gainsborough and Turner, there are collections here that reflect more modern times, including pieces by war artists – a great place to wander, pause and contemplate. *Romney Rd, SE10 9NF (020 8858 4422).*



A great day out...

'We're impressed and surprised with the area's ornate buildings and relaxing spaces. Today we took a boat from the city and are off to the Planetarium.'

Paula, Jacques, Janny, Marcel, Danielle and Tays at the Old Royal Naval College



Clocktower Market

Shopping

Greenwich Market

Greenwich Market is always buzzing. However, even on a busy Sunday afternoon when couples are browsing T-shirt stalls and foodies are sampling international dishes being cooked on the spot, the intimate scale of this market means it never feels overwhelming. There are stalls five days a week: on Wednesdays the main focus is fresh produce and homewares; on Thursdays and Fridays it's all about antiques, collectibles, crafts and vintage clothing; and on Saturday and Sunday there are all kinds of arts and crafts and fresh produce on offer. Whatever day you go, you'll find something unique, from a special handpainted gift to wonderful organic soap to treat yourself with at bathtime. *Dumford St, SE10 9HZ (www.shopgreenwich.co.uk).*

Clocktower Market

Just a couple of minutes' walk from the town centre, past the Greenwich Picturehouse, is a small array of quirky antique, vintage and craft stalls in the Clocktower Market.

Filled with antiques, vintage bric-a-brac, records, memorabilia, crafts, fashions and books, here you can browse for 20th-century kitsch homeware and design classics, flowers, elegant lace and jewellery. Open at weekends and on bank



A great day out...

'We often walk from New Cross to Greenwich Park as we know there's always something different in store. We particularly love the market for its handmade objects and fantastic food.'

Beth, Harriet, and Kylee at Greenwich Market

holidays, from 10am to 5pm, it's a fabulous place to browse, or to pick up something you won't find anywhere else in London.

166 Greenwich High Rd, SE10 8NN, (www.clocktowermarket.co.uk).

Shops open all week

New stores worth checking out within Greenwich Market (and open all week long) include gorgeous printed homewares at **Lush Designs** (6a Greenwich Market, SE10 9HZ, 020 8293 5662), silk accessories and designer clothes for men and women at **Emma Nissim** (10a Greenwich Market, SE10 9JA, 020 8853 3139), and Hartwig Braun's colourful cityscape drawings at **Arty Globe** (15 Greenwich Market, SE10 9HZ, 020 7998 3144).

Other favourites have their loyal following, offering traditional ideas presented in fresh and unusual ways. For kids, and those who want to release their inner six-year-old, there's **Compendia** (10 The Market, SE10 9HZ, 020 8293 6616), which sells classic board games



Mr Humbug



360 Degrees Vintage



and hobby ideas to test your skills.

A few doors along, the colourful sweetie jars of **Mr Humbug**

(Greenwich Market, SE10 9HZ, 020 7871 4944) are full of nostalgic delight for sweet

tooths. Many wonderful little shops reflect the area's taste for art and crafts, such as **Red Door** (10 Turnpin Lane, SE10 9JA, 020 8858 2131), which sells original ceramics, jewellery, bags, gifts and art. Even when it comes to health and beauty,

Greenwich offers something unusual, in the shape of **So Organic** (22

Nelson Rd, SE10 9JB, 0800 169 2579), which stocks a range of

gifts, homeware and also organic beauty products, which are carefully and ethically sourced.

360 Degrees Vintage (7a

Greenwich Market, SE10 9HZ, 07904

709 759) is a great place

to be transported back to chic styles from our 20th-century past, with clothes and accessories for men and women, all originals from the 1900s to 1980s. And only in Greenwich could you find somewhere like **Warwick Leadlay Gallery** (1-2 Nelson Arcade, SE10 9JB, 020 8858 0317), which stocks antique prints, maps and fine art, including a special Nelson collection, as well as modern prints and paintings.

For inspiring ideas and details of all the best shops, go to www.shopgreenwich.co.uk





Get here by DLR

To access the shops, open spaces and attractions, the nearest DLR station is Canary Wharf



Charles Tyrwhitt

Canary Wharf

Canary Wharf is a stylish shopping destination, but it's also great for going out, with lively bars and restaurants, music, comedy and free summer festivals

Shopping

Fashion

With over 200 shops, restaurants, cafés and bars, Canary Wharf is a convenient, self-contained leisure destination – whether you have an hour at lunch or a whole day at the weekend. At the four malls you'll find designer stores and big high street names, from luxury lingerie boutique **Myla** (Cabot Place West, 020 7715 5374) to **Reiss** (Jubilee Place, 020 7519 6176), **Topshop** (Canada Place, 020 7512 1996) and **Zara** (Cabot Place West, 020 7715 1970), so you don't have to fight the Oxford or Bond Street hordes

for the latest trends. Newly opened **Levi's** (Canada Place, 020 7519 6870) is the centre's first dedicated jeans store. **Hugo Boss** (Cabot Place West, 020 7715 5302) is great for working wardrobes, while **Kurt Geiger** (Cabot Place East, 020 7673 9869) has killer heels to off-duty sneakers.

Suits

As might be expected from a financial centre, sharply tailored workwear is on hand. Smarten up with a shirt from **Thomas Pink** (Cabot Place East, 020 7513 0303), a high-end suit from



Jermyn Street tailor **Charles Tyrwhitt** (Canada Place, 020 7513 2988), and add the finishing touch at **Church's English Shoes** (Cabot Place East, 020 7538 9730).

Jewellery

Sparkle-seekers are excited at news of the legendary **Tiffany & Co** coming in September. In the meantime, **Charles Fish** (Cabot Place East, 020 7512 9595) has watches, designer jewellery and its own diamond collection, and **Links of London** (Jubilee Place, 020 7519 1767) has additions to its 'Sweetie' bracelet range.

Health and beauty

Exercise in style at the **Reebok Sports Club** (Canada Square, 020 7970 0900), which includes a pool and spa. **Runners Need** (Churchill Place, 020 7512 9107) has gear for joggers, while **Evans Cycles** (South Colonnade, 020 7516 0094) caters



CANARY WHARF VALUE From June to September, Summer Screen (see p21) shows sporting musts from Ascot to Wimbledon in Canada Square, and the Greenwich+Docklands International Festival (see p21) has heaps of free performances and exhibitions.



A great day out...

'We're going shopping, we like the DLR because it's easy to get around on'

Therese and Charlotte

for pedal-pushers and **Sweaty Betty** (Cabot Place East, 020 7513 0666) has stylish workout gear and footwear including Asics, MBT and FitFlop. Wind down with a massage at **O Spa** (Cabot Place East, 020 7519 6589) or luxury nail treatment at **Nails Inc** (Cabot Place West, 020 7519 1669), with a just-opened Get Lashed counter for threading, tinting and strip lashes. Buy fancy toiletries at **Molton Brown** (Jubilee Place, 020 7718 8761), or create your own scent at **Jo Malone** (Jubilee Place, 0870 192 5391).

Food and homeware

Waitrose Food and Home (Canada Square, 020 7719 0300) stocks fine food, John Lewis furniture, fashion and audio-visual goods. Branches of **Marks & Spencer Simply Food** (Jubilee Place, 020 7513 2839) and **Tesco Metro** (Cabot Place West, 020 7506 7700) ensure plenty of choice.

Leisure

HMV (Canada Place, 020 7512 9222) is handy for music and DVDs, and **Game** (Canada Place, 020 7715 9650) is the place for computer software and games. Audio and video fans should head to **Currys Digital** (Cabot Place West, 020 7513 0330) and luxury brand **Bang & Olufsen** (South Colonnade, 020 7719 1234).



Eating

Whether you're hungry for high-end dining, an informal weekend lunch or a picnic to take to pretty Jubilee Park, Canary Wharf has a dizzying number of choices. The complex is buzzing with two new eating destinations – Churchill Place draws queues for **Jamie's Italian** (Churchill Place, 020 3002 5252), Jamie Oliver's high-quality trattoria serving handmade pasta and fresh antipasti at affordable prices. It's joined by newcomer **Rocket** (Churchill Place, 020 3200 2022), specialising in upmarket pizzas and creative mains, with a great balcony and terrace.

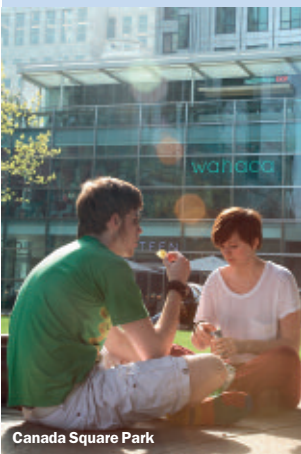


Outdoor spaces and green escapes

As an antidote to the awesome architecture of the famous skyscrapers, Canary Wharf houses a surprisingly extensive range of landscaped parks and plazas – 20 acres of them, to be precise. The area's plentiful public squares and green spaces are not only great spots to meet friends and relax, they're also a vital part of the area's cultural life, hosting great public art and a varied events programme.

Canada Square Park is at the epicentre of the busy arts and events schedule: as well as hosting the Canary Wharf Jazz Festival and City of London Festival concerts, it's the venue for the Canary Wharf Summer Screen, showing sporting events including the Wimbledon Championships, Formula 1 and The Open, as well as the Proms live from the Royal Albert Hall – for free. In November and December there's the return of the popular ice rink.

Beautifully landscaped **Jubilee Park** is one of the area's best-kept secrets, and is especially popular with families at weekends, who appreciate the calm surroundings and the pleasant gurgle of the water feature that runs the length of the park. Equally, it offers a tranquil escape for weekday lunch breaks, or alternatively you can wander down to **Westferry Circus Gardens**, another hidden gem.





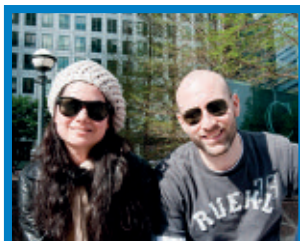
The Park Pavilion

Overlooking Canada Square Park is the Park Pavilion, where you can eat on the terrace of **The Parlour** gastrobar (Park Pavilion, 0845 468 0100), or opt for the stylish cocktail lounge indoors. **Wahaca** (Park Pavilion, 020 7516 9145), which spices things up with its vibrant Mexican street food. **Canteen** (Park Pavilion, 0845 686 1122), with its modern take on British classics, is at the centre of the business breakfast trend sweeping the area. For a dinner to impress, there's elegant Japanese restaurant **Roka** (Park Pavilion, 020 7636 5228), built around the high-energy cooking spectacle of an open robata charcoal grill, with a relaxed bar and outdoor terrace for dining.



One of summer's great pleasures, alfresco eating is a big draw in Reuters Plaza, just outside Norman Foster's iconic entrance to Canary Wharf station. Diners enjoy reliably good Italian fare – including refreshing gelato – at the outside tables by the docks at **Carluccio's** (Reuters Plaza, 020 7719 1749). Restaurant, bar and grill **Plateau** (Canada Place, 020 7715 7100) serves superior modern British/European fare and unrivalled top-floor views of Canada Square Park.

Newcomer **Byron** (Cabot Place East) impresses with its award-winning gourmet burgers, and the options for a quick and healthy bite are plentiful, from tasty sushi at **Wasabi** (Cabot Place East, 020 7719 6247) to fresh, seasonal meals and snacks at **Leon** (Cabot Place West, 020 7719 6200), with super-fast lunchtime takeaways and service from breakfast to dinner.



A great day out...

'We live in Bank but love coming to Canary Wharf. It's easy to get to on the DLR and quieter than the city. We especially enjoy coming here on a sunny day, there's open spaces to relax in and plenty of shops to visit.'

Stella and Diego, at Canary Wharf

Drinking

When all that working and shopping has taken its toll, a refreshing drink is just the ticket – fortunately, Canary Wharf has more than enough bars where you can take a load off and catch up with friends.

Brand new restaurant **Rocket** (see p11) has a ground-floor bar offering cocktails both classic and

For details of shops, bars, restaurants and events, go to www.mycanarywharf.com



imaginative. If you prefer the grape to the grain, the wine list runs to 60 bottles, with over a dozen champagnes. At the classic

Nicolas Wine Bar (Canada

Square, 020 7512 9283) you can select any wine from the

extensive range in the shop and drink it in the bar for only a £1 corkage fee.

There are cocktails with a view at **Wahaca's** relaxed terrace bar, specialising in tequila, mezcal and Mexican beer, with swing chairs and a football table. And at **Roka's** bar

overlooking Canada Square Park (see left) you can enjoy shochu with a view – Japan’s other national spirit, distilled from barley, buckwheat, sweet potatoes and sugar.

Pub fans should head for the **Cat & Canary** (Fisherman’s Walk, 0207 512 9187), where pints can be sipped and sporting events can be followed on screen. Nearby **Davy’s** (Fisherman’s Walk, 020 7363 6633) has a relaxed buzz and is ideal for groups.

Non-alcoholic thirst-quenchers can be obtained at **Crussh** (One Canada Square and Jubilee Place), where fruit juices are freshly squeezed to order. When only caffeine will hit the spot, one of the complex’s many cafés, such as French favourite **Paul** (Cabot Place East, 020 7519 1703), is always around the corner – just as well, since business deals and retail therapy both require high levels of energy.

Arts and events

If you thought Canary Wharf was just about work and shopping, think again.

Along with the alfresco musical delights and the foodie pleasures to be had at **Summer Sounds** (June 21), the **Summer Screen** season at **Canada Square Park** is now an established favourite. See live events beamed onto a big screen for free, as you sit back and enjoy the arts in the glorious outdoors, including selected **Proms concerts** from the Royal Albert Hall, and a live relay from the **Royal Opera House** (July 13) of Verdi’s *Simon Boccanegra*. There are also screenings of major sporting events including the climax of **Royal Ascot** (June 18-19), **Wimbledon** (June 21-July 4) and **The Open** golf championship (July 15-18).

Canada Square Park hosts a varied programme of live music, including the well-established **Canary Wharf Jazz Festival** (Aug 13-15), with artists including Ruby Turner. The annual **City of London Festival** arrives in July, with free performances from British jazz pianist **Julian Joseph** and his Big Band on July 8, the **London Symphony Orchestra** with pianist Artur Pizarro on July 9 and Brazilian



singer **Monica Vasconcelos** on July 10, after afternoon samba, capoeira and berimbau workshops in **Cabot Square**. During the festival there will also be street pianos in Jubilee Park and Reuters Plaza, for impromptu sing-alongs or after-work ivory-tickling.

Also at Canada Square Park is the **Twilight Delights** season of Thursday night concerts from the likes of George Fame (July 29) and a Romantic Opera night (Aug 26). And at the **East Wintergarden** there’s a calendar of events from quiz nights to the **Canary Wharf Comedy Club** and **Acoustic After Hours with...** featuring great artists in an intimate setting.

From a romantic swoosh around the **open air ice rink** in Canada Square Park in winter, to the **Motorexpo** car show, throughout the Canary Wharf estate (June 7-13), there’s lots to keep you busy. For more details of events see www.mycanarywharf.com.

5 great places by DLR... to meet friends

- **The bar at 1802, next door to Museum of London Docklands (see p16)**
- **The fountains at Cabot Square, Canary Wharf (see p10)**
- **Greenwich’s Bar du Musée for its great brunch – get there early or book for a table outside (see p20)**
- **The cobbled promenade at Tower Wharf, Tower of London (see p17)**
- **The calm, green surrounds of Jubilee Park, Canary Wharf (see p11)**

Galleries and art

Canary Wharf has one of the UK’s largest public art collections. Art can be found incorporated into the architecture – **Wendy Ramshaw’s** ornamental Columbus Screen is part of the courtyard of the same name, while colourful mosaics by **Emma Biggs** are embedded in the floor and walls of the Jubilee Place and Cabot Place West retail malls. **Lynn Chadwick’s** enamel bronze sculpture ‘*Couple on Seat*’ possesses a striking geometric presence as it sits in Cabot Square looking towards West India Quay. There are also lighting installations by **Martin Richman** and **Catherine Yass**, and **Bill Culbert’s** neon ‘*Coup de Foudre 2*’ at Churchill Place is among works recently added to this collection, which includes **Andrew Burton’s** towering red brick ‘*Chimney*’ overlooking Westferry Circus. An **Art Map** is available, describing the 59 artworks in and around Canary Wharf’s buildings.

The **Window Galleries** in Canada Place retail mall showcase changing displays by contemporary artists and designers, including fashion and contemporary crafts. You will also find new art and photography on **Canada Walk** opposite Waitrose and work by local projects at the **Community Gallery** on Jubilee Walk, just off Canada Place mall.

The lobby of **One Canada Square** also provides an airy space for contemporary installations by established and up-and-coming artists in the **Sculpture in the Workplace** programme, which also includes an outdoor show in Jubilee Park each spring.





Get here by DLR

The nearest DLR station to Museum of London Docklands is West India Quay or Canary Wharf

Museum of London Docklands

This splendid place, a real draw for both children and their parents, has recently joined the noble group of museums that don't charge for entry

On the waterfront

It's now free to visit the magnificent Museum of London Docklands. The museum focuses on the capital's Thames-side story, exploring how London has gradually grown up around the river and how, long before the world's financial institutions arrived on its banks, the river helped the city amass its huge wealth.

The museum's four-storey building is itself a historical artefact. Once a

warehouse used for storing sugar, it's over 200 years old and the ancient timber pillars have deep rope grooves cut into them to prove its hard-working past. Hundreds of years of life by the river, right up today, are captured by the models of the different cutters and hoys that carried cargo up and down the Thames. There's a magnificent reconstruction of Sailortown (a wonderful but very smelly evocation of 1840s Wapping), a cooperage and customs office, as well as personal testimonies by hundreds of people from different eras.

The museum doesn't flinch from difficult truths, either. The 'London, Sugar & Slavery' exhibit explores London's terrible role in the slave trade, while the poverty suffered in London and the city's role in the whaling trade are revealed, with trade-union flags and protest songs battling for space with harpoons and jawbones.

Girl power

Heavy industry built the docks, which means the museum focuses mainly on the male of the species, but two new exhibitions counter this bias. 'Here Come the Girl Guides: 100 years of Guiding in London' (June 26-October 31) includes rare film footage, photos and artefacts. The exhibition's curator, Jim Gledhill, tells the history of uniformed youth movements in the capital (August 5) and an ambassador from today's Girl Guides leads a craft-making session (July 31, October 23). In the same vein, 'Women Making the London Olympics' (until October 31) is a display of photographs by Janie Airey of women working on the 2012 Olympics site. In addition, the 'Belles of Bow' east London walk follows the footsteps of famous suffragette Sylvia Pankhurst (August 11, £8).



MUSEUM OF LONDON DOCKLANDS VALUE Now offering free entry, the Museum of London Docklands also hosts a variety of free events, from lunchtime lectures for adults to storytelling and souvenir-making for kids – see www.museumoflondon.org.uk/docklands.

For details of
what's on visit
www.museumoflondon.org.uk/docklands



'Women Making the London Olympics'

Bridge circa 1400, and the merchant ship Susan Constant. There's a gruesome gibbet cage that was used to execute pirates in the 18th century and the dark alleys of Sailortown will have them pinching their noses in glee.

Mudlarks – a children's exhibit-cum-indoor playground – is great for young ones. Here they can load a ship with cargo, learn how merchants weighed tea, tie knots and construct grand houses for wealthy dockmasters. There's an under-fives play area and Storytime for under-fives most Thursdays (3pm), plus lots of regular term-time events (see website for updates). Most Mondays are set aside for Mini Mudlarks (babies, 12.45pm) and Little Mudlarks (toddlers, 10.15am), as staff involve them in crafts and music activities – or simply let them make a mess!

Wartime

It is 70 years since the Battle of Britain and Operation Dynamo (better known as the evacuation of Dunkirk), lending the museum's Docklands at War exhibit extra pathos this year. There's an air-raid shelter in which to sit and imagine the terror locals felt on Black Saturday, September 7 1940 – the first night of the Blitz – and a fascinating big-screen film with rare footage from the London Fire Brigade, showing the scale of the devastation wreaked on the docks. Oil paintings from the official war artist William Ware add emotional punch. The docks weren't just victims, though. They were involved in developing secret technology, such as undersea fuel pipes and Mulberry harbours for the Normandy landings, and the Maunsell Forts, all represented by great models and films. The 'Docks in Wartime' tours (June 18, July 31, August 17, September 21, November 16, December 14 and January 11) bring the exhibit to life.

For kids

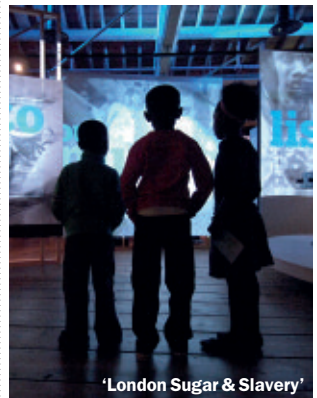
Museum of London Docklands prides itself on being a family-friendly attraction. Older children will love the intricate models, especially an enormous representation of London



A great day out...

'We all love the museum because it's a really accurate reproduction of the history and ports of London.'

Lisa, Angelo, Victoria, Maud and Louise, at Museum of London Docklands



'London Sugar & Slavery'



'Blood Alley and Beyond'

Walks

There are trails within the museum, such as the gruesome 'Crime & Grime' family trail or the historic 'Thames Highway' trail. The cloakroom on the third floor has leaflet guides and quizzes, and kids get exhibit-specific activities and smell bags. There's also help for visually impaired visitors on the tactile 'Vocaleyes' tours (August 8, October 10, December 12).

Around the museum a variety of Docklands tours bring exhibits to life, such as Brian Grover's 'West India Docks' walk (December 18) and S I Martin's 'Blood Alley and Beyond' (October 27, November 20), on West India Docks and the slave trade. Or construct your own GPS trail with Museum of London Docklands new iPhone app, **Streetmuseum**. Available free on iTunes, it lets you view over 200 images of London past, overlaid on the area as it looks now, from skaters on the frozen Thames to buildings being destroyed in the Blitz.

Events

The museum offers a wide range of activities and events throughout the year for both children and adults. One of the most appealing things about Museum of London Docklands is the background of sounds playing as you walk round. 'Soundtrack for London' (July 28, August 3-4 & 10-11) offers younger visitors a chance to create

their own backing track to the museum. Other child-friendly events are 'Sailor's 1000 Stories' on the first Saturday of the month, a mix of stories and puppet-making, and 'The Real Pocahontas' (July 10), which explores the life of the native American princess. Grown-ups will enjoy 'Oscar Kirk's Diary' (July 22), a reading from a dockside messenger boy's 100-year-old account; the London Festival of Architecture events in June; Dr Shihan de Silva's 'Abolition and the East' (July 15) on the effects of the end of the slave trade, and the Londonist evening film screenings, including 'The Ladykillers' (Nov 28). See p21 for more events details.



A great day out...

'We've come from Tower Hamlets to the museum. It was easy to get to on the DLR with children, and is a fantastic, well laid out and interactive place. We made a special trip today for the chocolate tasting.'

Grace, Irene, Charis, Peter and Lynda, at Museum of London Docklands

1802: fine dining on West India Quay

Not too many museums come with an adjoining restaurant-bar offering the sort of quality that 1802 does. Run by Searcys, the people behind the award-winning 40/30 at Norman Foster's Gherkin and the new St Pancras Grand and Barbican restaurants, 1802 offers much more than just a relaxing cup of tea after a hard day's fact-finding.

Set on the ground floor of the museum, like the rest of the building it retains its rope-worn timber pillars, while polishing up as a rather swish lounge bar with gleaming fittings, serving up to 300 people. The fare varies from modern sharing platters and snacks to light bites, reasonably priced set menus, a meaty selection of grilled dishes and spruced-up versions of pub grub. A free child's pasta dish is offered with every adult main meal purchased and there are often extra offers available, particularly early in the week.

The front terrace overlooks West India Quay, so it's the perfect place to enjoy a sun-splashed afternoon. With a terrific selection of wines, cocktails and a mind-boggling array of beers and ciders from all over the world, it would seem 1802 is keen on getting people into the party spirit, and the area is buzzing after work. Night-time entertainment includes live music on Wednesdays, and a DJ on Thursdays and Fridays. Happy hour is 5-7pm on weekdays.

To find out more about 1802 or to book a table, call 020 7538 2702, email 1802.docklands@museumoflondon.org.uk, or see www.museumoflondon.org.uk/docklands.





The White Tower



Get here by DLR
The nearest DLR
station to the Tower of
London is Tower Gateway

For updates on
events and attractions,
go to [www.hrp.org.uk/
toweroflondon](http://www.hrp.org.uk/toweroflondon)



watch as **Knights at War** are dressed in full armour, before a fight explodes between two masters of the sword. In school holidays and on weekends, there are many **events and fun activities** – take a free family trail, hunt for treasure, and much more.

Re-enactments and events are on selected dates only, so check the website for details.

Tower of London

New experiences at this World Heritage Site make the iconic fortress an exciting 21st-century day out

The must-sees

Fit for a King is the stunning new exhibition showcasing five centuries of royal arms and armour. Get an idea of what it would be like to square up to Henry VIII; his set of bespoke armour is a star in the collection, with matching attire for his horse!

Pace the battlements in **Fortress** and discover what it was like to be a medieval soldier defending the Tower – plus see the real soldiers that still guard it today.

Hear tales of prisoners, torture and execution by joining a tour with one of the **Yeoman Warders** (popularly known as Beefeaters). The tours last about an hour and start every 30

minutes (until mid-afternoon) from near the main entrance

The priceless **Crown Jewels** are still used by the royal family today, and include the largest rough gem-quality diamond in the world.

Get to grips with armour and weapons in the **White Tower**: lift a musket, draw a bow, handle a sword and see how your skills compare with a master Bowman of 500 years ago.
Tower of London, Tower Hill, EC3N 4AB (0844 482 7777, www.hrp.org.uk).

Relive the drama

Regular re-enactments bring the bloody history of the Tower to life.

Prisoners of the Tower is a chance to hear the stories of the unlucky people who were sent to the Tower by Tudor kings and queens. You can also join the forces of medieval monarchs as they prepare the **Fortress** for an impending attack – you might even get to shoot their siege weapons – and

Eating

Grab something light from **Paul** on Tower Wharf, and sit by the Thames. Or try the **New Armouries** restaurant at the Tower, set in a wonderful old military storehouse. The menu offers coffee and cakes, sandwiches or traditional mains such as beef and ale pie or fish and chips.



A great day out...

'We've visited the Tower of London today and are now off to Tower Bridge. It's so beautiful, historic and famous.'
Ana, Philippe and Mathilde, at the Tower of London



TOWER OF LONDON VALUE Become a member of Historic Royal Palaces and enjoy unlimited admission for a year to the Tower, Hampton Court Palace, Banqueting House, Kensington Palace and Kew Palace from just £41. (Price correct at print date).



Get here by DLR

To access the main attractions, the nearest DLR station is Cutty Sark for Maritime Greenwich



Tapery at Greenwich Picturehouse



Greenwich culture & dining

There's more to do in Greenwich than see the sights. World-class arts can be enjoyed here, while the hungry will find great pit stops and elegant dining venues

8858 9256) is also a must for contemporary theatre and bold interpretations of the classics.

Greenwich Dance provides the chance for the public and professional dancers of all ages to practise and learn (Borough Hall, Royal Hill, SE10 8RE, 020 8293 9741) as well as

presenting regular performances.

Their work also ventures out to other dance projects around Greenwich and south-east London. **Up the Creek** (302 Creek Rd, SE10 9SW, 020 8858 4581) is one of London's best-loved comedy venues. Every Thursday anyone is welcome to step up to the mic in the Comedy Variety Show.

Theatre and comedy

The busy and varied programme at **Greenwich Theatre** (Crooms Hill, SE10 8ES, 020 8858 7755) stretches well beyond this grand old venue's beginnings as a music hall. Opera, musicals, theatre for children and contemporary drama all draw the crowds on a regular basis. The **Greenwich Playhouse** (189 Greenwich High Rd, SE10 8JA, 020

Greenwich Dance



Art and design

As well as the **Queen's House** galleries and the Wernher Collection at the **Ranger's House** (see p8) Greenwich has lots to see.

The **Stephen Lawrence Gallery** celebrates diversity in the work of contemporary artists, architects and designers (Queen Anne Court, University of Greenwich, SE10 9LS, 020 8331 8260). Additionally, at the **Viewfinder Photography Gallery**



GREENWICH VALUE If the weather is halfway decent, grab picnic goodies at Marks & Spencer (55 Greenwich Church St, SE10 9BL, 020 8853 1840) and take them to the lush green squares of the Old Royal Naval College or Greenwich Park (see p7).



St Alfege Church

(Linear House, Peyton Place, SE10 8RS, 020 8858 8351), you'll find contemporary artists in showcase exhibitions and workshops. There are also changing exhibitions at **Greenwich Printmakers** (Greenwich Market, 020 8858 1569) and the **Tourist Information Centre** (2 Cutty Sark Gardens, SE10 9LW).

Music and film

You can enjoy lunchtime recitals and evening performances within the Old Royal Naval College (see p6), and Hawksmoor's **St Alfege Church** (Greenwich Church St, SE10 9LB, 020 8853 0687, www.st-alfege.org) has a programme of classical and sacred concert series – see website for details.

In summer, the **Bandstand** in Greenwich Park hosts concert band performances for free on Sunday afternoons. Alternatively, **Peter de Wit's Café** (21 Greenwich Church St, SE10 9JB, 020 8305 0048) is a cracking place that offers live jazz for the dinner sitting on Saturday evenings all year round.

Major international pop legends pass through the nearby **O2** (Peninsula Square, SE10 0DX, 0844 865 0202) on a regular basis, but as well as the arena, there is the more intimate **indigO2**. Also at The O2, you'll find a treasure trove of rock and

pop memorabilia at the interactive **British Music Experience**.

Greenwich Picturehouse (180 Greenwich High Rd, SE10 8NN, 0871 704 2059) is a beautifully refurbished arthouse cinema with four screens, not to mention a fabulous first-floor bar.

Festivals

The **Greenwich+Docklands International Festival** features spectacular outdoor performances around Canary Wharf and the open spaces of Greenwich. Enjoy music, dance and theatre, all for free (June 24 to July 4, www.festival.org).

The **Greenwich Film Festival** takes place from 15 to 18 July, and includes screenings in the parks, Queen's House, the planetarium and cinemas. **Summer Sessions** is a series of alfresco concerts in the grounds of the Old Royal Naval College, this year including Athlete and Jools Holland (July 21 to 24).

On September 18-19, **Open House London 2010** (www.londonopenhouse.org) allows visitors to roam the private quarters of the area's great buildings. And in November, **Greenwich Jazz** returns in partnership with the London Jazz Festival (www.londonjazzfestival.org.uk, Nov 12-21). Greenwich hosts the **International Early Music Festival and Exhibition** (Nov 12-14) at the Old Royal Naval College, promoted by Trinity College of Music, the Greenwich Foundation and the Early Music Shop (www.earlymusicshop.com).

5 great places by DLR... for couples

- **A secluded afternoon tea in the Fan Museum garden (see right)**
- **Sharing a jazz gig at Peter de Wit's Café (see left)**
- **A long lunch at 1802, Museum of London Docklands (see p16)**
- **His and hers fashion shopping at Cabot Place, Canary Wharf (see p10)**
- **Watching the Thames flow by at the Tower of London (see p17)**

Tea breaks

Whether it's the Georgian splendour of the local architecture or a tiring day's shopping that gives you a thirst, Greenwich has no shortage of cafés for a brew and a slice of cake.

The **Buenos Aires Café** (86 Royal Hill, SE10 8RT, 020 8488 6764) is a perfect place to stop for a little continental sweet treat or a filling Argentinian steak sandwich. By contrast, **Royal Teas Café** (76 Royal Hill, SE10 8RT, 020 8691 7240) is a vegetarian café where you can grab a coffee and enjoy the pretty Greenwich village setting.

Whether you want to get a coffee to go or stop off for something freshly baked, **Paul Rhodes Bakery** (37 King William Walk, SE10 9HU, 020 8858 8995) is a wonderful artisan bakery and café just a couple of minutes from the river and the market. Alternatively, pick up some aromatic delights to take home while stopping off for a cuppa at **Nevada Street Deli** (8 Nevada St, SE10 9JL, 020 8293 9199).

Greenwich is not short of cafés with a view. Set within Greenwich Park, the **Cow and Coffee Bean** (St Mary's Lodge, SE10 8PU, 020 8293 0703) is a pretty spot to get a coffee and a sandwich. Or head for the Fan Museum's **Orangery** and hidden garden, where afternoon tea is served on Tuesday and Sunday (12 Crooms Hill, SE10 8ER, 020 8305 1441).



Nevada Street Deli

Drinking

As the corner of London that was once the hub of seafaring Britain, you could hardly expect Greenwich to be short of good alehouses, but alongside the likes of charming traditional boozers the **Trafalgar Tavern** (6 Park Row, SE10 9NW, 020 8858 2909), there are gastropubs and wine bars that also make a perfect place to meet up with friends.

For example, one great new arrival is the bright and busy **The Old Brewery** (Discover Greenwich, Old Royal Naval College, SE10 9LW, 020 3327 1280), a microbrewery owned by Greenwich's own Meantime Brewing Company, where you can taste something new or grab some hearty modern British nosh.

Meantime also owns the **Greenwich Union** (56 Royal Hill, SE10 8RT, 020 8692 6258), with a good range of their exciting ales as well as some lovingly sourced international beers.

The **Gipsy Moth** (60 Greenwich Church St, SE10 9BL, 020 8858 0786) is a great pub for the hungry, as well as those looking for a decent pint or a glass of good wine.

The **Coach and Horses** (13 Greenwich Market, SE10 9HZ, 020 8293 0880) is a beautifully presented pub that sits on the corner of Greenwich Market, with a covered outdoor seating area opening on to the market stalls, and an appealingly cosy interior where you can kick back on the sofas and take a closer look at the lovely things you've just bought.



Trafalgar Tavern



The Old Brewery

Eating

If you can resist the food stalls in the market, there are plenty of places you can get a light lunch or a serious steak.

For a special something, the French dining on offer in the elegant surrounds of the **Spread Eagle**

(2 Stockwell St, SE10 9JN, 020 8853 2333) is a favourite locally. Or go for the international menu at the serenely chic **Greenwich Park and Grill**

(1 King William Walk, SE10 9JH, 020 8853 7860), or the superbly prepared British menu at **Rivington Greenwich**

(178 Greenwich High Rd, SE10 8NN, 020 8293 9270), by the Greenwich Picturehouse. Alongside the original Rivington in Shoreditch, this branch shares the honour of being one of just three, the other being located in Dubai! Or try **Inside** (19 Greenwich South St, SE10 8NW, 020 8265 5060), a classy modern European restaurant with great set menus.

If you want a less formal meal out with friends, opt for the north Indian cuisine served at the airy and friendly **Mogul** (10 Greenwich Church St, SE10 9BJ, 020 8858 6790), or the Spanish dishes of **Taperia** at Greenwich Picturehouse

(180 Greenwich High Rd, SE10 8NN, 020 8269 0003). **The Hill** pub (89 Royal Hill, SE10 8SE, 020 8691

3626) is a popular eating out venue with locals, offering British and European mains, while

Bar du Musée (17 Nelson Rd, SE10 9JB, 020 8858 4710) is famed for its delicious brunches and well-priced French dining, as well as being set right by the

thick of the Greenwich Market action.

For information and ideas for days out, go to www.visitgreenwich.org.uk



A great day out...

'I come on the DLR from Lewisham to study at the University of Greenwich. I love the area for its old beautiful buildings, peaceful open spaces, and the spectacular view of The O2, Canary Wharf, and the river.'

Hena at the Old Royal Naval College

Events

Here are just a few highlights from the remainder of the year

JUNE

Violent Universe

Ongoing

A new show at the Planetarium is an exploration of the solar system, narrated by Patrick Stewart.

Royal Observatory. Cutty Sark DLR. Age 5+; £6.50, concs £4.50.

Summer Screen: Sports All summer

From Ascot (June 18, 19) to Wimbledon (June 21-July 4), to Formula 1 racing (June to Sept) and major golfing events (July 8-11, 15-18), the Summer Screen will be a chance to enjoy the action alfresco.

Canada Square Park. Canary Wharf DLR. Free.

Window Galleries:

Becca Williams

Until July 2

The Art & Design galleries in Canada Place mall become showcase spaces for upcoming art, design and craft talents. This month the focus is on Becca Williams, whose work is inspired by childhood memories.

Canada Place. Canary Wharf DLR. Free.

Prisoners of the Tower

Until July 31

Hear tales of woe from the prisoners of the Tudor monarchs – help them plot their escape or watch them get sent to their deaths!

Tower of London. Tower Gateway DLR. Free with entry.

Roller Disco

Until Aug 31

Up to 350 skaters at a time can shimmy on their wheels

to pop hits and disco classics – great fun with mates!

The O2. North Greenwich tube. £5-£10.

Toy Boats

Until Oct 31

A celebration of toy boats from 1850 onwards, enjoyed by adults and children. There is also a 'Boats that Built Britain' exhibition at the museum which runs until November.

National Maritime Museum. Cutty Sark DLR. Free.

Motorexpo

June 7-13

The UK's largest free motor show gives visitors a chance to see the latest vehicles from the biggest names in carmaking.



Tower of London Fit for a King

Discover five centuries of stunning royal armour, from the Tudors (including Henry VIII), to today's royal family. Plus! There's a chance to get to grips with a gauntlet, musket and swords, and draw a bow. How will your skills compare with those of a master bowman of 500 years ago? This exhibition runs throughout 2010.

Throughout Canary Wharf. Canary Wharf DLR. Free.

Life Sculpture Workshop

June 12

A sculpture workshop based around the west African bronze heads on display in the 'London, Sugar and Slavery' galleries. All materials are provided, but wear old clothes or an apron.

Museum of London Docklands. West India Quay DLR. Age 16+; £15.

London, Sugar & Slavery

gallery tour

June 19, July 15, Aug 3, Sept 7, Oct 5, 19, Nov 2, 30, Dec 28, Jan 25

A guided tour of the Museum's thought-provoking permanent exhibition about London's involvement with the slave trade. Times vary.

Museum of London Docklands. West India Quay DLR. 3-4pm. Free.

The Grand Designers

June 20

An architectural tour of the Old Royal Naval College to celebrate the London Festival of Architecture.

Old Royal Naval College. Cutty Sark DLR. £5.

Summer Sounds

June 21

Celebrate the longest day of the year with live music and festivities throughout Canary Wharf, including a food festival from 11am. A whole day of events running from 7.30am-9pm.

Various locations around Canary Wharf. Canary Wharf DLR. Free.

Greenwich+Docklands

International Festival

June 24-July 4

An array of performances, exhibitions and displays in Greenwich, Canary Wharf and even on the river. Many events are free.

Check www.festival.org for

line-up and location details.

London Festival of Architecture

June 24-30

The Museum takes part in this Londonwide festival with a discussion on the black and Asian presence in the London landscape (June 24, 1-2pm) and a debate about future design in the capital (June 30, 6-8pm).

Museum of London Docklands. West India Quay DLR. Free.

London Festival of Architecture –

Welcoming City

June 24-28

Live performance, art installations, visual art and film all combine to create a special free mini-festival to mark LFA 2010. All events are free.

Various locations around Canary Wharf. Canary Wharf DLR.

JULY

Dancing City

July 1-3

Canary Wharf becomes the dance floor for a host of colourful dancers from around the world throughout each day and evening, as part of the Greenwich+Docklands International Festival.

Various locations around Canary Wharf. Canary Wharf DLR. Free.

Summer holiday events

Throughout July and August

There are regular free daytime craft, storytelling and performance events, including The Real Pochahontas (July 10), Recycled Art (Aug 14) and Designs for Chocolate (Aug 24, 27 & 31). Times vary.

Museum of London Docklands. West India Quay DLR. Age 5+.

12.30pm, 2.30pm,
3.30pm.

Greenwich Film Festival **July 15-18**

Screenings of a diverse range of films in parks, squares, the planetarium and local cinemas. There's also a sci-fi fancy dress screening of 'Barbarella' the Peter Harrison Planetarium (July 17, 6pm). *Various locations around Greenwich. Cutty Sark DLR. Free-£10.*

Archaeology and Discovery Weekend **July 17, 18**

A rare chance to visit Tower Beach, hunt for treasure, and have it identified by experts. Access to the beach depends on the tides, approx noon-4pm (Sat) and 12.45-14.45 (Sun). *Tower of London (and Wharf). Tower Gateway DLR. Free with entry.*

Greenwich Summer Sessions **July 21-25**

Guests include Seth Lakeman, The Levellers, the Royal Philharmonic Orchestra, Jools Holland and Athlete. Shows in the grand surrounds of the Old Royal Naval College grounds. *Old Royal Naval College. Cutty Sark DLR. £15-£32.50*

Oscar Kirk's Diary **July 22**

An exploration of the diary of Oscar Kirk, a 14-year-old who worked as a messenger boy for the Port of London Authority in 1919. *Museum of London Docklands. West India Quay DLR. 1pm. Age 16+; free.*

Twilight Delights **July 22, 29, Aug 5, 19, 26, Sept 2**

Making the most of warmer months, these open-air live performances include

Romantic Opera (Aug 5), the Royal Philharmonic Orchestra concert (Aug 26), and the Blues Brothers Revue (Sept 2). *Canada Square Park. Canary Wharf DLR. Free.*

British Music Experience Festival Season **July 23 - Sept 3**

This summer kids go free during the British Music Experience's Festival Season. Play, sing, dance and listen to all things festival at this fun exhibition devoted to pop music and other rock delights. *The O2. North Greenwich tube. Free (adults £15).*

AUGUST

Knights at War **Aug 1-31**

Tales and demonstrations bring the middle ages to life as knights and their ladies show what the age of chivalry was really like. *Tower of London. Tower*



Canary Wharf Jazz Festival

A firm favourite in the London jazz calendar, this open-air, free festival embraces the best of traditional and modern jazz, jazz-funk, Latin and soul. Favourites like Ruby Turner and Pee Wee Ellis are among a busy programme on Friday (7-10pm), Saturday (1.30-9.15pm) and Sunday (1-7.30pm). **August 13-15.**

Gateway DLR. Age 6+; Free with entry.

Family learning event **Aug 7**

A range of activities including arts, crafts and badge-making help family visitors to discover more about the hidden stories of the Tower.

Tower of London. Tower Gateway DLR. Age 6+; Free with entry.

Toys through the Ages **Aug 12, 19, 26**

Special grandparents' days at the museum, where grannies and their grandchildren are invited to join a series of events about bygone kids' toys. *National Maritime Museum. Cutty Sark DLR. Age 6+; free.*

The Thin Red Line **Aug 15**

A chance to meet the British Red Coats, the Duke of Wellington's soliders, as they prepare for battle. *Tower of London. Tower Gateway DLR. Age 6+; free with entry.*

Londonist Film **Aug 29, Sept 26, Nov 28**

Screenings of favourite films set in London (see website for details). Tickets allocated on arrival. 2pm *Museum of London Docklands. West India Quay DLR. Free.*

SEPTEMBER

Astronomy Photographer of the Year 2010 **Sept 10-Jan 9 2011**

A special showcase for the award-winning photographs from the 2010 competition. *Royal Observatory Greenwich. Cutty Sark DLR. Free.*

Open House London 2010 **Sept 18, 19**

Open House expands into



Greenwich Comedy Festival

Some of the best homegrown and international comedy talent comes to Greenwich for another round of revelry across many Greenwich venues in the second Greenwich Comedy Festival. There are even daytime comedy shows suitable for children. **September 6-12.**

an amazing celebration of architecture and interior design, as many usually closed buildings invite the public in. *Various locations around Greenwich. Cutty Sark DLR. Free.*

The Laramie Project **Sept 21-25**

The Tectonic Theater Project explore a homophobic attack and murder that took place in Wyoming in 1998 in this powerful theatre piece. *Greenwich Theatre. Greenwich DLR. £12.50-£17.50.*

Run to the Beat **Sept 26**

London's only half-marathon where live music and DJ acts help spur the runners on, with the course starting and finishing at The O2 arena. *The O2. North Greenwich tube.*

Acoustic After Hours with... **Sept 29, Oct 20**

Live music at this mellow

regular club session, with different artists.
East Wintergarden, Canary Wharf. Canary Wharf DLR.

OCTOBER

Rum and Coca-Cola

Oct 19-23

A bittersweet comedy in which a former calypso star waxes lyrical about his life, while his sidekick protégé strives for a brighter future.
Greenwich Theatre. Greenwich DLR. £12.50-£17.50.

Half term events

Oct 25-27, 29, 30

Children's art sessions for The Big Draw (Oct 25) are included in a week of daily activities like craft workshops and storytelling.
Museum of London Docklands. West India Quay DLR. Free.

Haunted House

Oct 31

A day of spooky activities with visitors young and old invited to dress up in their ghoulish best.
Queen's House. Cutty Sark DLR. Free.

NOVEMBER

The Games

Nov 4-6

A comedy inspired by Greek tales in which three athletes enter the largest sporting event in the ancient world.
Greenwich Theatre. Greenwich DLR. £12.50-£17.50

Discover Sundays

Nov 7, 14, 21, 28

Activities for all ages that encourage you to discover stories of adventure and create something through art, design or music.
11.30am-1.30pm and 2-4pm.
National Maritime Museum. Cutty Sark DLR. Free.

Greenwich International Early Music Festival and Exhibition

Nov 12-14

Three days of performance and exhibition dedicated to early music.
Old Royal Naval College. Cutty Sark DLR.

Diwali celebrations

Nov 13

A lively afternoon of music, dance and workshops for all ages. In collaboration with Emergency Exit Arts.
From 12.30pm.
National Maritime Museum. Cutty Sark DLR. Free.

Canary Wharf Ice Rink

From mid Nov

Glide around the open-air rink, or sit back, relax and watch the skaters go by.
Canada Square Park. Canary Wharf DLR.

Greenwich Jazz

Nov 12-21

Live jazz sessions across



Museum of London Docklands Victorian Grotto

Get in the festive mood with this Christmas grotto, open December 4 to 23. Have your photo taken with Santa, or, on November 13, help make traditional festive decorations to adorn the magical grotto. Child Grotto entry £5. (From December 27 to January 2 it becomes Scrooge's Grotto!)

the area including events with Riverfront Jazz, Blackheath Halls and Trinity College of Music.
Various venues in Greenwich. Cutty Sark DLR.

A day on old London Bridge

Nov 20

A vibrant storytelling session, with a recreation of the sights and sounds of the old bridge. 12.30-1.15pm and 2.30-3.15pm.
Museum of London Docklands. West India Quay DLR. Age 4+; free.

Cinderella

Nov 25-Jan 9

Perfect panto dame Andrew Pollard leads a Xmas show with true frilly-knickered gusto in a festive theatre treat for all the family.
Greenwich Theatre. Cutty Sark DLR. £9-24.

DECEMBER

Christmas in Greenwich

Dec 1-31

Seasonal gifts and food in the Christmas Market, plus a chance to enjoy the Advent Windows community project around the town.
Around Greenwich. Cutty Sark DLR.

It's a wrap!

Dec 12

Make Christmas cards and wrapping paper with artist Rosie Fuller, in an adult workshop on vintage festive craft.
Museum of London Docklands. West India Quay DLR. 11am-4pm. £30.

A Christmas Carol

Dec 18

A special performance of the Dickens classic for families. Tickets are allocated on arrival.
Museum of London Docklands. West India Quay DLR. 12.30am-1.30pm, 2.30-3.30pm. Age 7+; free.

Addresses

Canada Place, Canada

Square Park and Canary Wharf E14 (mycanarywharf.com). Canary Wharf DLR.

East Wintergarden

43 Bank St, E14 (0207 418 2725, eastwintergarden.com). Canary Wharf or Heron Quays DLR.

Greenwich Theatre

Crooms Hill, SE10 8ES (020 8858 7755, greenwichtheatre.org.uk). Cutty Sark DLR.

Museum of London

Docklands West India Quay, E14 (020 7001 9844, museumoflondon.org.uk/docklands). West India Quay or Canary Wharf DLR.

National Maritime

Museum Romney Rd, SE10 9NF (020 8858 4422, nmm.ac.uk). Cutty Sark DLR.

The O2 Peninsula Square, SE10 0BB (0844 856 0202, theo2.co.uk). North Greenwich tube.

Old Royal Naval College

King William Walk, SE10 9LW (020 8269 4747, oldroyalnavalcollege.org). Cutty Sark DLR.

Queen's House

Romney Rd, SE10 9NF (020 8858 4422, nmm.ac.uk). Cutty Sark DLR.

Royal Observatory and Peter Harrison

Planetarium Greenwich Park, SE10 9NF (020 8858 4422, nmm.ac.uk). Cutty Sark DLR.

Tower of London

Tower Hill EC3N 4AB (0844 4827 777, hrp.org.uk). Tower Gateway DLR.

Trinity College of Music

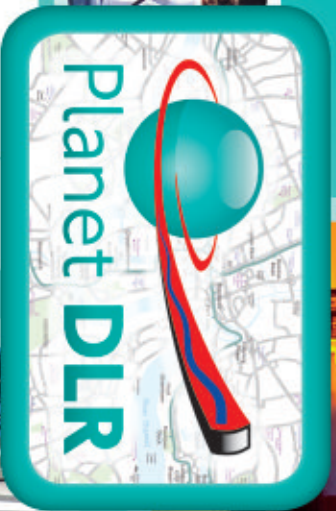
Old Royal Naval College, King William Walk, SE10 9JF (020 8305 4444, tcm.ac.uk) Cutty Sark DLR.

Discover Planet DLR...

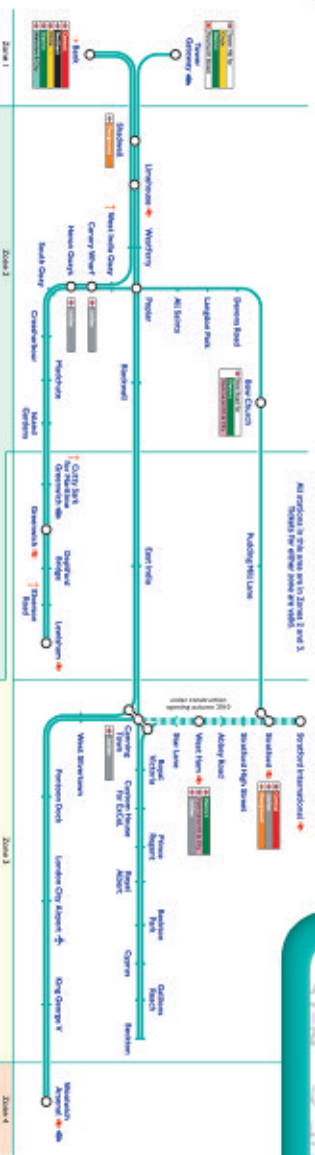
...on www.dlr.co.uk. In July 2010 the website will be packed with even more information on the latest events and popular venues around Greenwich & Docklands, as well as featuring a brand new search and mapping tool, Planet DLR.

Find a world of dining, leisure, fun and facilities on Planet DLR.

Visit www.dlr.co.uk



For 24-hour travel information, telephone 020 7222 1234.
For DLR Customer Services, telephone 020 7363 9700.



- 1 At certain times trains from Bank towards Londonham will not stop at West India Quay station. The first two sets and last two sets of doors on a three-carriage train will not open at Canary Wharf for Maritime Greenwich or Blenheim Road stations. Please use the centre of the train.
- 2 Lift access to DLR platforms at Bank station is unavailable from March 2010 due to London Underground escalator work.

MAYOR OF LONDON

Transport for London

